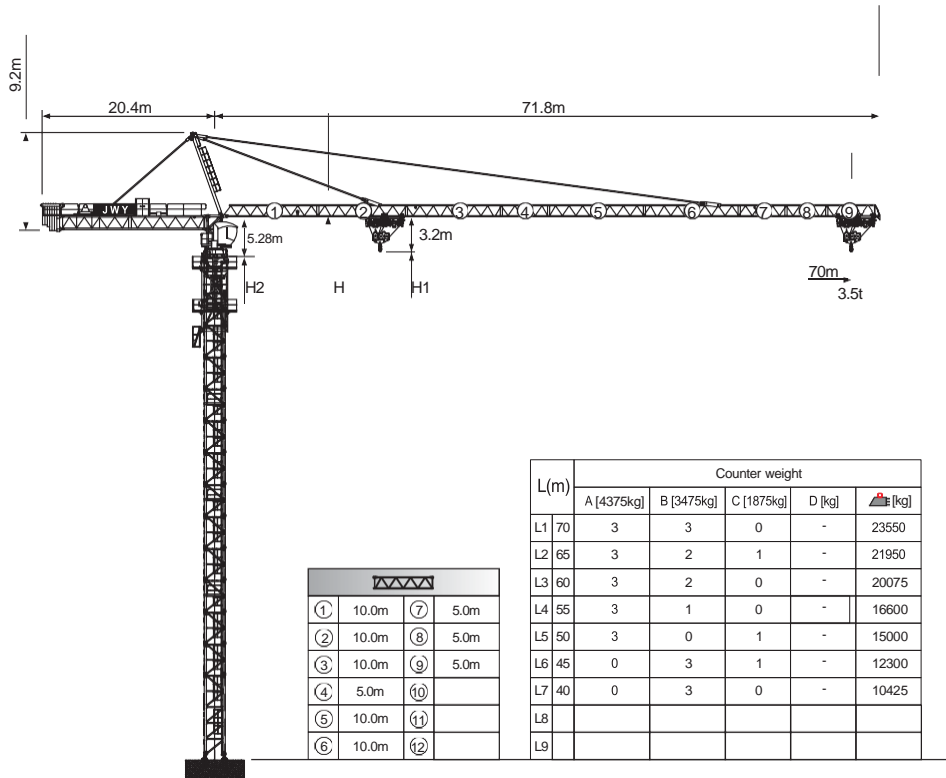
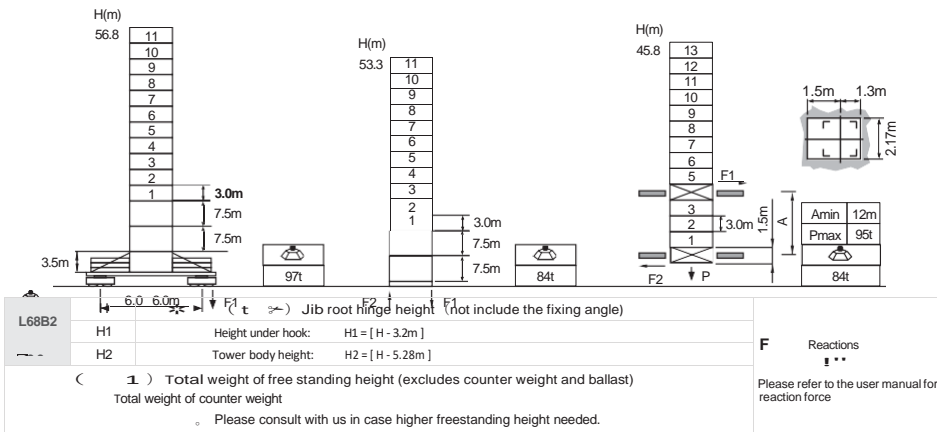


# TOWER CRANES JT300 12 TON



①	10.0m	⑦	5.0m
②	10.0m	⑧	5.0m
③	10.0m	⑨	5.0m
④	5.0m	⑩	
⑤	10.0m	⑪	
⑥	10.0m	⑫	

## %&'()\* Jib root hinge height

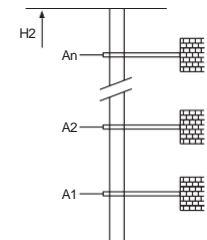


## !""#\$ Load diagrams

R	falls	R(C <sub>max</sub> )	C <sub>max</sub>	t	15	17	20	22	25	27	30	32	35	37	40	42	45	47	50	52	55	57	60	62	65	67	70	
70m	↓	3.3~44.1	6	t	6.0	6.0	6.0	6.0	6.0	6.0	6.0	6.0	6.0	6.0	6.0	5.86	5.58	5.20	4.97	4.66	4.47	4.21	4.05	3.83	3.69	3.50		
	↓	3.3~22.8	12	t	12.0	12.0	12.0	12.0	10.52	9.63	8.53	7.91	7.12	6.66	6.06	5.70	5.23	4.95	4.57	4.34	4.03	3.84	3.58	3.42	3.20	3.06	2.87	
65m	↓	3.3~46.5	6	t	6.0	6.0	6.0	6.0	6.0	6.0	6.0	6.0	6.0	6.0	6.0	6.0	5.85	5.45	5.21	4.89	4.69	4.42	4.25	4.02				
	↓	3.3~23.7	12	t	12.0	12.0	12.0	12.0	11.02	10.10	8.95	8.31	7.48	7.00	6.37	6.00	5.51	5.22	4.82	4.58	4.26	4.06	3.79	3.62	3.39			
60m	↓	3.3~48.6	6	t	6.0	6.0	6.0	6.0	6.0	6.0	6.0	6.0	6.0	6.0	6.0	6.0	6.0	5.65	5.41	5.07	4.87	4.59						
	↓	3.3~24.5	12	t	12.0	12.0	12.0	12.0	11.42	10.47	9.29	8.62	7.76	7.27	6.62	6.24	5.73	5.43	5.02	4.77	4.44	4.23	3.95					
55m	↓	3.3~49.1	6	t	6.0	6.0	6.0	6.0	6.0	6.0	6.0	6.0	6.0	6.0	6.0	6.0	6.0	5.85	5.60	5.25								
	↓	3.3~24.7	12	t	12.0	12.0	12.0	12.0	11.82	10.84	9.62	8.93	8.05	7.54	6.87	6.48	5.95	5.64	5.22	4.97	4.62							
50m	↓	3.3~50.0	6	t	6.0	6.0	6.0	6.0	6.0	6.0	6.0	6.0	6.0	6.0	6.0	6.0	6.0	6.0	6.0	6.0	6.0	6.0	6.0	6.0	6.0	6.0	6.0	6.0
	↓	3.3~26.0	12	t	12.0	12.0	12.0	12.0	12.0	11.21	9.95	9.25	8.33	7.81	7.12	6.72	6.18	5.85	5.42									
45m	↓	3.3~45.0	6	t	6.0	6.0	6.0	6.0	6.0	6.0	6.0	6.0	6.0	6.0	6.0	6.0	6.0	6.0	6.0	6.0	6.0	6.0	6.0	6.0	6.0	6.0	6.0	6.0
	↓	3.3~26.8	12	t	12.0	12.0	12.0	12.0	12.0	11.58	10.29	9.56	8.62	8.08	7.37	6.95	6.40											
40m	↓	3.3~40.0	6	t	6.0	6.0	6.0	6.0	6.0	6.0	6.0	6.0	6.0	6.0	6.0	6.0	6.0	6.0	6.0	6.0	6.0	6.0	6.0	6.0	6.0	6.0	6.0	6.0
	↓	3.3~27.2	12	t	12.0	12.0	12.0	12.0	12.0	10.79	10.03	9.05	8.48	7.75														

## + Anchorage

An[m]	A1	A2	A3	A4	A5	A6	A7	A8	A9	A10
	37.5	64.5	91.5	118.5	145.5	172.5	199.5	226.5	253.5	-
H2 [m]	75.0	102.0	129.0	156.0	183.0	210.0	237.0	224.0	291.0	-
※ Over this height please contact us										



## - Mechanisms

⚡	75QFK30	m/min	45	90	55kW	730m >730m※
		t	6	3		
⚡	DVF	m/min	22.5	40	5.5kW	
		t	12	6		
⚡	RCV145	rpm	0~65		2x7.5kW	
			0~0.8			
⚡		380V 50Hz( 5%)			90kVA	kVA
		380V 60Hz( 5%)				
		440V 60Hz( 5%)				
※	Please consult us					
			△	■	Option	

