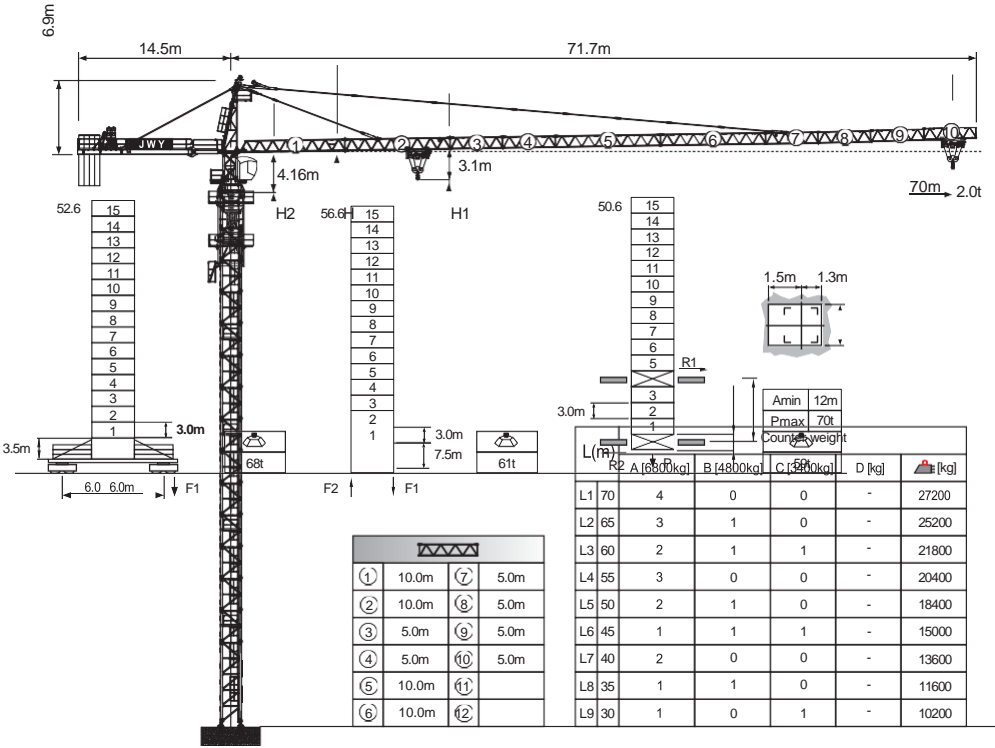


TOWER CRANE JT 200 12TON



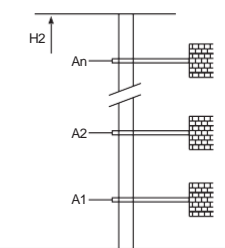
Load diagrams

R	falls	R(C _{max})	C _{max}	m	15	17	20	22	25	27	30	32	35	37	40	42	45	47	50	52	55	57	60	62	65	67	70
70m	↓	3.0~28.9	6	t	6.0	6.0	6.0	6.0	6.0	6.0	5.77	5.36	4.83	4.52	4.12	3.89	3.57	3.38	3.13	2.98	2.77	2.64	2.47	2.36	2.22	2.13	2.00
70m	↓	3.0~15.4	12	t	12.0	10.72	8.97	8.07	6.99	6.40	5.67	5.26	4.73	4.42	4.02	3.79	3.47	3.28	3.03	2.88	2.67	2.54	2.37	2.26	2.12	2.03	1.90
65m	↓	3.0~29.8	6	t	6.0	6.0	6.0	6.0	6.0	6.0	5.95	5.53	4.99	4.67	4.26	4.02	3.69	3.50	3.24	3.08	2.87	2.74	2.56	2.45	2.30		
65m	↓	3.0~15.8	12	t	12.0	11.04	9.25	8.32	7.21	6.61	5.85	5.43	4.89	4.57	4.16	3.92	3.59	3.40	3.14	2.98	2.77	2.64	2.46	2.35	2.20		
60m	↓	3.0~31.9	6	t	6.0	6.0	6.0	6.0	6.0	6.0	6.0	5.98	5.40	5.06	4.62	4.36	4.02	3.81	3.53	3.36	3.13	3.00	2.80				
60m	↓	3.0~16.9	12	t	12.0	11.89	9.97	8.98	7.79	7.15	6.34	5.88	5.30	4.96	4.52	4.26	3.92	3.71	3.43	3.26	3.03	2.90	2.70				
60m	↓	3.0~34.0	6	t	6.0	6.0	6.0	6.0	6.0	6.0	6.0	6.0	5.81	5.45	4.98	4.71	4.34	4.12	3.82	3.64	3.40						
55m	↓	3.0~18.1	12	t	12.0	12.0	10.70	9.64	8.37	7.68	6.82	6.34	5.71	5.35	4.88	4.61	4.24	4.02	3.72	3.54	3.30						
50m	↓	3.0~35.3	6	t	6.0	6.0	6.0	6.0	6.0	6.0	6.0	6.0	6.0	6.0	5.70	5.21	4.92	4.54	4.31	4.00							
50m	↓	3.0~18.8	12	t	12.0	12.0	11.15	10.05	8.73	8.02	7.12	6.62	5.97	5.60	5.11	4.82	4.44	4.21	3.90								
45m	↓	3.0~37.1	6	t	6.0	6.0	6.0	6.0	6.0	6.0	6.0	6.0	6.0	6.0	6.0	5.51	5.21	4.80									
45m	↓	3.0~19.7	12	t	12.0	12.0	11.75	10.59	9.21	8.46	7.52	6.99	6.31	5.92	5.41	5.11	4.70										
40m	↓	3.0~38.2	6	t	6.0	6.0	6.0	6.0	6.0	6.0	6.0	6.0	6.0	6.0	5.7												
40m	↓	3.0~20.3	12	t	12.0	12.0	12.0	10.93	9.51	8.74	7.77	7.23	6.53	6.13	5.60												
35m	↓	3.0~35.0	6	t	6.0	6.0	6.0	6.0	6.0	6.0	6.0	6.0	6.0	6.0	6.0												
35m	↓	3.0~20.3	12	t	12.0	12.0	12.0	10.93	9.51	8.74	7.77	7.23	6.53														
30m	↓	3.0~30.0	6	t	6.0	6.0	6.0	6.0	6.0	6.0	6.0	6.0	6.0	6.0	6.0												
30m	↓	3.0~20.3	12	t	12.0	12.0	12.0	10.93	9.51	8.74	7.77																

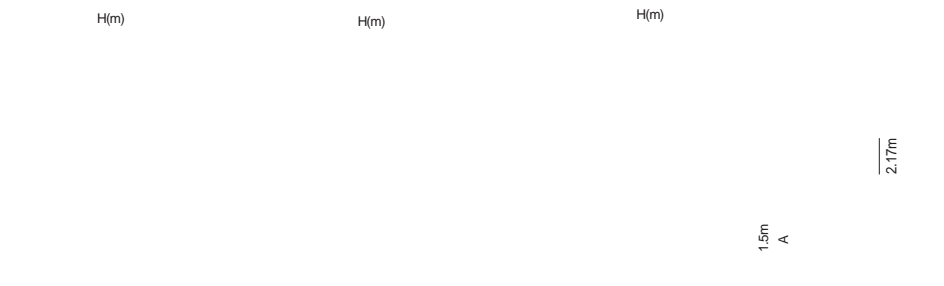
Anchorage

An [m]	A1	A2	A3	A4	A5	A6	A7	A8	A9	A10
H2 [m]	42.0	69.0	96.0	123.0	150.0	177.0	204.0	231.0	-	-
H2 [m]	82.5	106.5	133.5	160.5	187.5	214.5	241.5	268.5	-	-

※ Over this height please contact us



Jib root hinge height



L68B2	H	※ (t) Jib root hinge height (not include the fixing angle)	F Reactions
	H1	Height under hook: H1 = [H - 3.1m]	Please refer to the user manual for reaction force
	H2	Tower body height: H2 = [H - 4.16m]	
<p>1. Total weight of free standing height (excludes counter weight and ballast)</p> <p>Total weight of counter weight</p> <p>Please consult with us in case higher freestanding height needed.</p>			

Mechanisms

75QP30HS-G8	m/min t	0~45	0~90	55kW	660m >660m※	
		6.0	3.0			
DVF	m/min t	0~22.5	0~45	5.5kW	2x5.5kW	
		12.0	6.0			
JH13F	rpm	0~0.7				
⚡	380V 50Hz(5%) 380V 60Hz(5%) 440V 60Hz(5%)		85kVA		kVA	
※	Please consult us		△ i Option			

